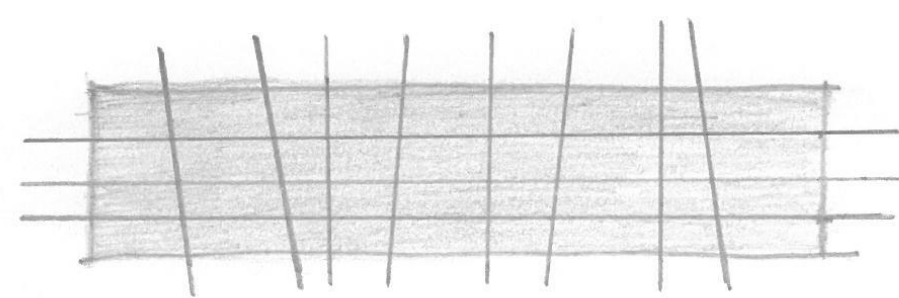
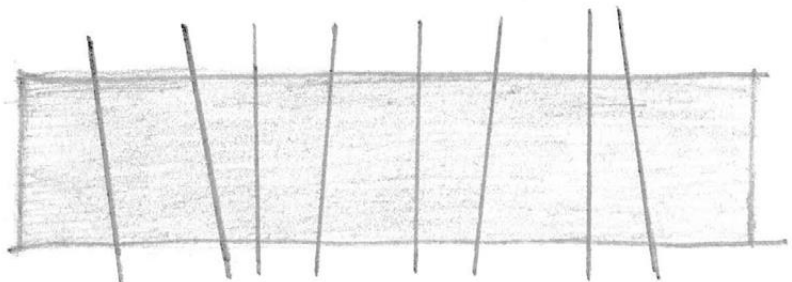
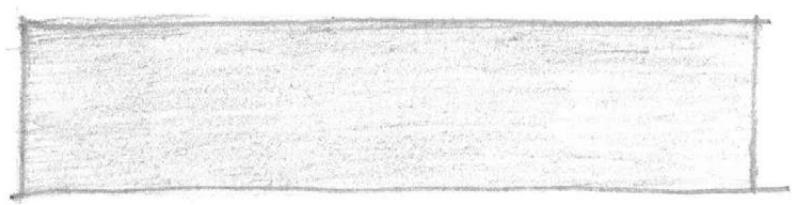




## Design of the Powerhouse

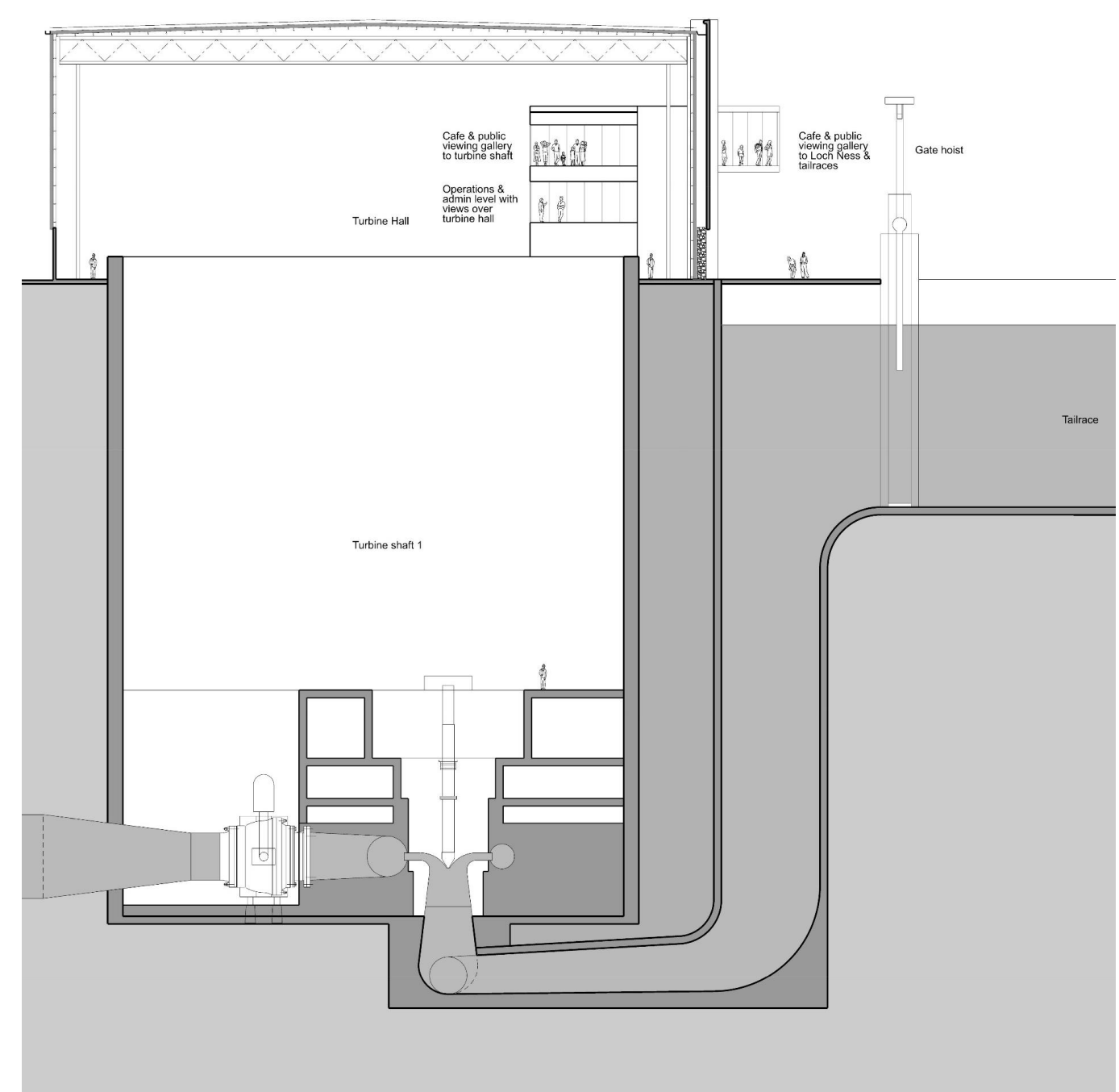
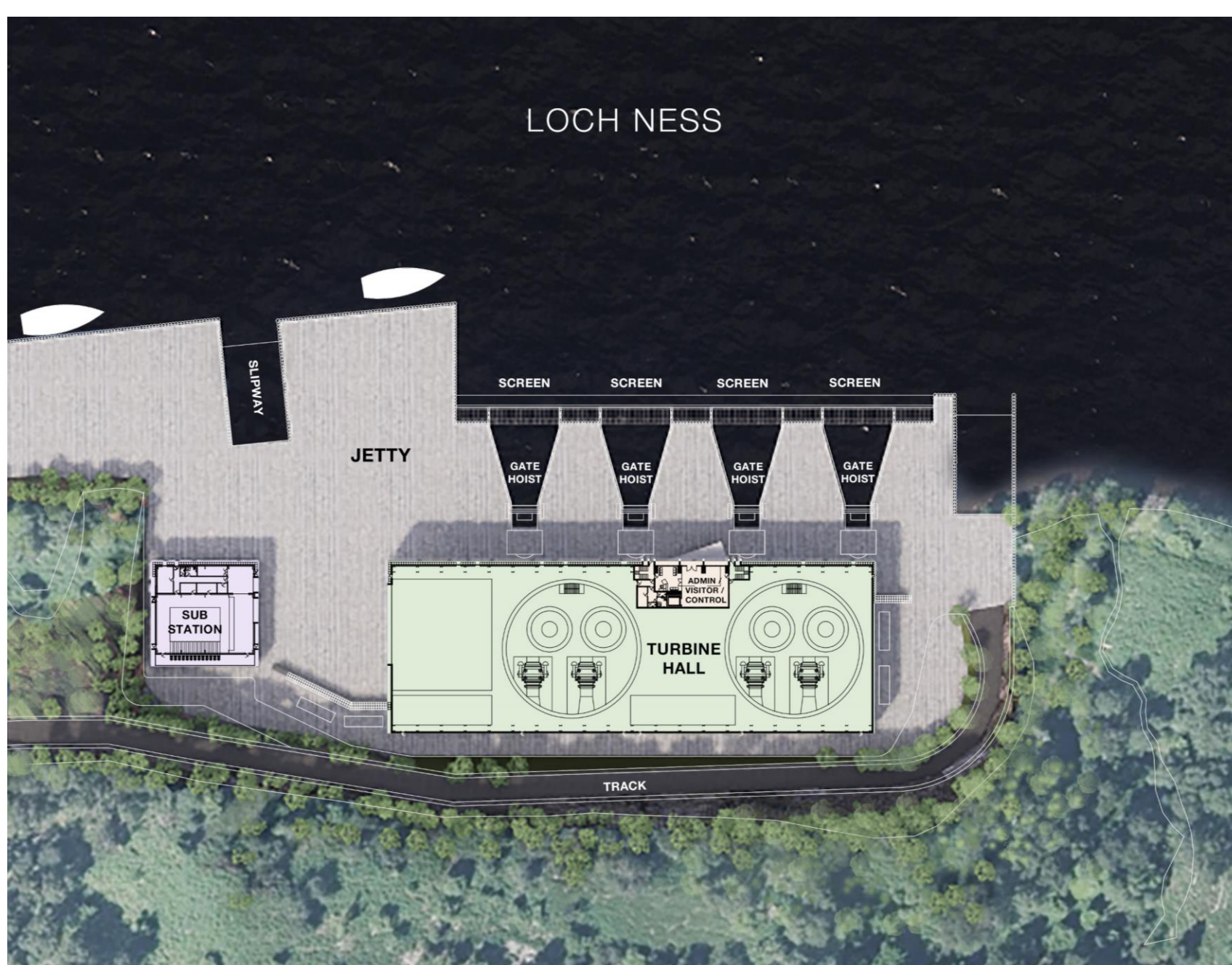


### Powerhouse Elevation Concept Process

Examination of the site context led to a discovery of a striking pattern of tree stalks in the linear landscape, which can be abstracted as a series of vertical marks. The linear elevation can be broken vertically with the abstracted marks bisecting the plane of the building. This creates a vertical / horizontal connection.

### Design Rationale

The powerhouse containing the turbines, control room and proposed visitor centre will be positioned on the shore of Loch Ness. The design of the powerhouse and sub-station has been inspired by the simple but powerful landscape, while drawing on the fine tradition of the hydro-electric schemes of the past, where contemporary yet simple industrial forms settle neatly into their surroundings. The use of glass, concrete and stone, along with the green roof, is reflective of the materials, forms and textures occurring within the context of the site.



Visualisation from the North