

Grid Ref: 244688 817533 Distance to Proposed Development: 1.07 km AOD: 15m



Scale: 1:25,000 @A3

Take the A82 from Inverness through Drumnadrochit, approximately 2km south from Alltsigh pull in on the left side of the road where there is a wooden gate and a small grass-covered path leading down towards the shore of Loch Ness. Follow this path by foot for approximately 150m until you reach the visualisation location on a rocky beach.

FIGURE V3b-1a
VL1 - In the vicinity of the A82 north of Invermoriston



Tripod Photo

Key

- Site Boundary
- Visualisation Location

Drawing No. - 120019-D-EIA-V3b-1a
 Revision - 1.0.0
 Date - 06/11/2023



Photomontage

Figure V3b-1b Visualisation Location 1: In the vicinity of the A82 north of Invermoriston
- Photomontage- Year 1 of Construction

OS reference: 244688 E 817533 N Distance to proposed Scheme: 0.18 km Groundlevel: 15m AOD Direction of view: 142°
Camera: Sony ILCE-9 Focal length: 50mm vertical (27°) x 28mm horizontal (65.5°) Camera height: 1.5m Date:13/05/2023 Time: 14:08

Drawing No. - 120019-D-EIA-V3b-1b-1.0.0 Date- 15.11.2023

The images contained on this page and the following are not representative of scale and distance from the actual viewpoint and shows the proposed development in its wider landscape context only.



Figure V3b-1c Visualisation Location 1: In the vicinity of the A82 north of Invermoriston
- Photomontage- Year 3 of Construction

OS reference: 244688 E 817533 N Distance to proposed Scheme: 0.18 km Groundlevel: 15m AOD Direction of view: 142°
Camera: Sony ILCE-9 Focal length: 50mm vertical (27°) x 28mm horizontal (65.5°) Camera height: 1.5m Date:13/05/2023 Time: 14:08

The images contained on this page and the following are not representative of scale and distance from the actual viewpoint and shows the proposed development in its wider landscape context only.



Figure V3b-1d Visualisation Location 1: In the vicinity of the A82 north of Invermoriston
- Photomontage- Year 1 Post Completion

OS reference: 244688 E 817533 N Distance to proposed Scheme: 0.18 km Groundlevel: 15m AOD Direction of view: 142°
Camera: Sony ILCE-9 Focal length: 50mm vertical (27°) x 28mm horizontal (65.5°) Camera height: 1.5m Date:13/05/2023 Time: 14:08

The images contained on this page and the following are not representative of scale and distance from the actual viewpoint and shows the proposed development in its wider landscape context only.



Photomontage

Figure V3b-1e Visualisation Location 1: In the vicinity of the A82 north of Invermoriston
- Photomontage- Year 10 Post Completion

OS reference: 244688 E 817533 N Distance to proposed Scheme: 0.18 km Groundlevel: 15m AOD Direction of view: 142°
Camera: Sony ILCE-9 Focal length: 50mm vertical (27°) x 28mm horizontal (65.5°) Camera height: 1.5m Date:13/05/2023 Time: 14:08

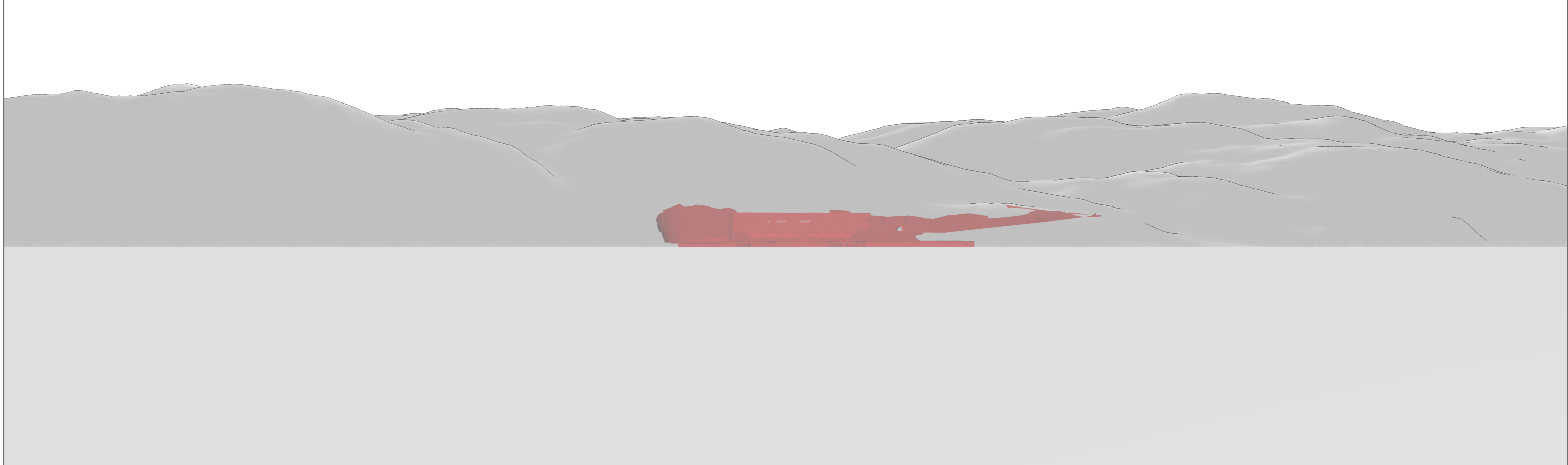
The images contained on this page and the following are not representative of scale and distance from the actual viewpoint and shows the proposed development in its wider landscape context only.



Existing view

Terrain model

OS reference: 244688 E 817533 N Distance to proposed Scheme: 0.18 km Groundlevel: 15.0 m AOD Direction of view: 142°
Camera: Sony ILCE-9 Focal length: 50mm vertical (27°) x 28mm horizontal (65.5°) Camera height: 1.5m Date:13/05/2023 Time: 14:08



FigureV3b-1f - Visualisation Location 1: In the vicinity of the A82 north of Invermoriston - Baseline Photograph & Wireline



Photomontage

FigureV3b-1g Visualisation Location 1: In the vicinity of the A82 north of Invermoriston
- Photomontage - Year 1 of Construction

OS reference: 244688 E 817533 N Distance to proposed Scheme: 0.18 km Groundlevel: 15.0 m AOD Direction of view: 142°
Camera: Sony ILCE-9 Focal length: 50mm Camera height: 1.5m Date:13/05/2023 Time: 14:08

Drawing No. - 120019-D-EIA-V3b-1b-1.0.0 Date- 15.11.2023

When viewed at a comfortable arms length (approx. 500mm), this printed image is representative of our detailed central vision, but is not representative of scale and distance.



Photomontage

FigureV3b-1h Visualisation Location 1: In the vicinity of the A82 north of Invermoriston
- Photomontage - Year 1 of Construction

This image should be viewed at a comfortable arms length (approx. 500mm)

OS reference: 244688 E 817533 N Distance to proposed Scheme: 0.18 km Groundlevel: 15.0 m AOD Direction of view: 142°
Camera: Sony ILCE-9 Focal length: 75mm Camera height: 1.5m Date:13/05/2023 Time: 14:08



Photomontage

FigureV3b-1i Visualisation Location 1: In the vicinity of the A82 north of Invermoriston
- Photomontage - Year 3 of Construction

OS reference: 244688 E 817533 N Distance to proposed Scheme: 0.18 km Groundlevel: 15.0 m AOD Direction of view: 142°
Camera: Sony ILCE-9 Focal length: 50mm Camera height: 1.5m Date:13/05/2023 Time: 14:08

When viewed at a comfortable arms length (approx. 500mm), this printed image is representative of our detailed central vision, but is not representative of scale and distance.



Photomontage

FigureV3b-1j Visualisation Location 1: In the vicinity of the A82 north of Invermoriston
- Photomontage - Year 3 of Construction

This image should be viewed at a comfortable arms length (approx. 500mm)

OS reference: 244688 E 817533 N Distance to proposed Scheme: 0.18 km Groundlevel: 15.0 m AOD Direction of view: 142°
Camera: Sony ILCE-9 Focal length: 75mm Camera height: 1.5m Date:13/05/2023 Time: 14:08



Photomontage

**FigureV3b-1k Visualisation Location 1: In the vicinity of the A82 north of Invermoriston
- Photomontage - Year 1 Post Completion**

OS reference: 244688 E 817533 N Distance to proposed Scheme: 0.18 km Groundlevel: 15.0 m AOD Direction of view: 142°
Camera: Sony ILCE-9 Focal length: 50mm Camera height: 1.5m Date:13/05/2023 Time: 14:08

When viewed at a comfortable arms length (approx. 500mm), this printed image is representative of our detailed central vision, but is not representative of scale and distance.



Photomontage

FigureV3b-1l Visualisation Location 1: In the vicinity of the A82 north of Invermoriston
- Photomontage - Year 1 Post Completion

This image should be viewed at a comfortable arms length (approx. 500mm)

OS reference: 244688 E 817533 N Distance to proposed Scheme: 0.18 km Groundlevel: 15.0 m AOD Direction of view: 142°
Camera: Sony ILCE-9 Focal length: 75mm Camera height: 1.5m Date:13/05/2023 Time: 14:08



Photomontage

**FigureV3b-1m Visualisation Location 1: In the vicinity of the A82 north of Invermoriston
- Photomontage - Year 10 Post Completion**

OS reference: 244688 E 817533 N Distance to proposed Scheme: 0.18 km Groundlevel: 15.0 m AOD Direction of view: 142°
Camera: Sony ILCE-9 Focal length: 50mm Camera height: 1.5m Date:13/05/2023 Time: 14:08

When viewed at a comfortable arms length (approx. 500mm), this printed image is representative of our detailed central vision, but is not representative of scale and distance.



Photomontage

FigureV3b-1n Visualisation Location 1: In the vicinity of the A82 north of Invermoriston
- Photomontage - Year 10 Post Completion

This image should be viewed at a comfortable arms length (approx. 500mm)

OS reference: 244688 E 817533 N Distance to proposed Scheme: 0.18 km Groundlevel: 15.0 m AOD Direction of view: 142°
Camera: Sony ILCE-9 Focal length: 75mm Camera height: 1.5m Date:13/05/2023 Time: 14:08